

UB1220-T

Maintenance-Free



POWERSTRIDE BATTERY

Specification

Nominal Voltage	12 volts		
Nominal Capacity	77° F (25° C)		
20-hr. (0.10A)	2.00 Ah		
10-hr. (0.19A)	1.86 Ah		
5-hr. (0.34A)	1.70 Ah		
1-hr. (1.20A)	1.20 Ah		
Approximate Weight	1.54 lbs (0.7 kg)		
Internal Resistance (approx.)	40mΩ		
Shelf Life (% of normal capacity at 77° F (25° C))			
3 Months	6 Months	12 Months	
91%	82%	64%	
Temperature Dependency of Capacity	(20 hour rate)		
104° F	77° F	32° F	5° F
102%	100%	85%	65%



Charge Method (Constant Voltage)

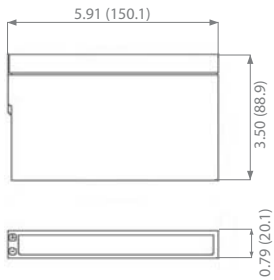
Cycle Use (Repeating Use)

Initial Current	0.6 A or smaller
Control Voltage	14.6-14.8 V

Float Use

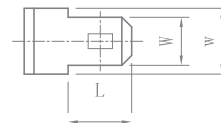
Control Voltage	13.6-13.8 V
-----------------	-------------

Physical Dimensions: in (mm)



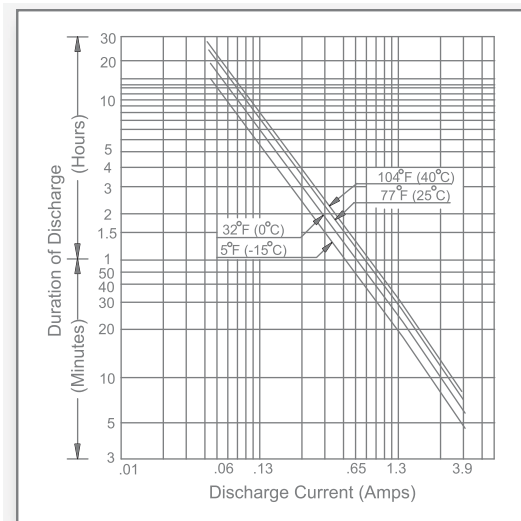
L: 5.91in (150.1 mm)
W: 0.79in (20.1 mm)
H: 3.50in (88.9 mm)
TH: 3.50in (88.9 mm)
 Tolerances are +/- 0.04 in. (+/- 1mm) and +/- 0.08 in. (+/- 2mm) for height dimensions. All data subject to change without notice.

Terminals

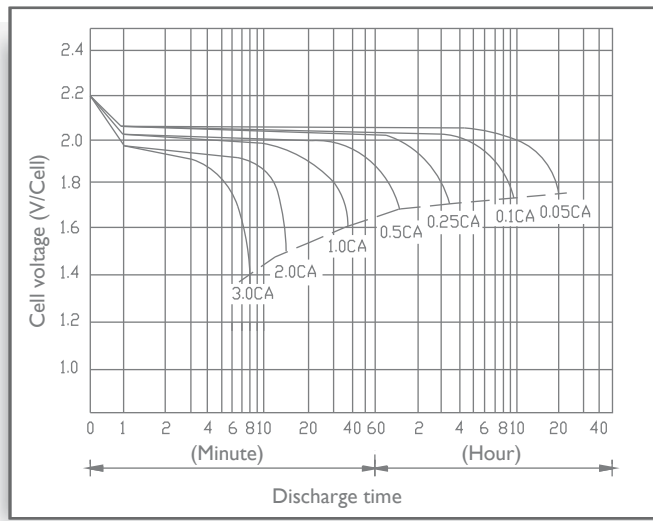


Dimension Type	L	W	w	H	T
F1	6.50	4.75	6.00	5.00	0.80

Discharge Time vs. Discharge Current



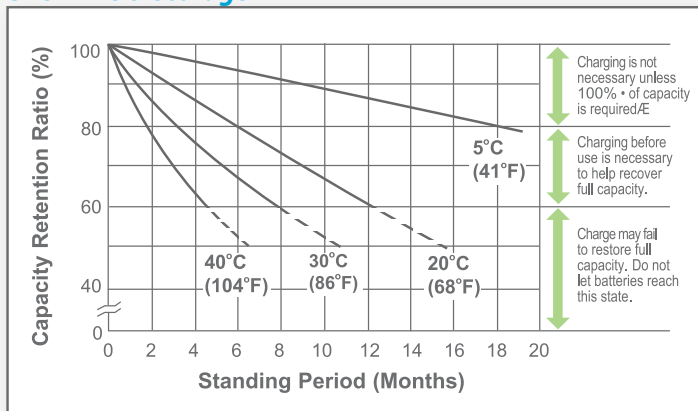
Discharge Characteristics



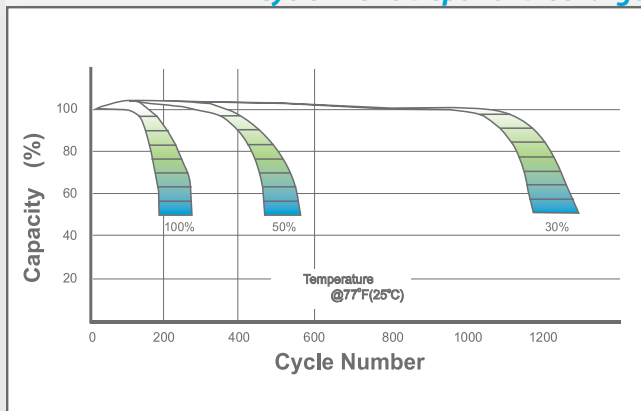
UB1220-T

Maintenance-Free

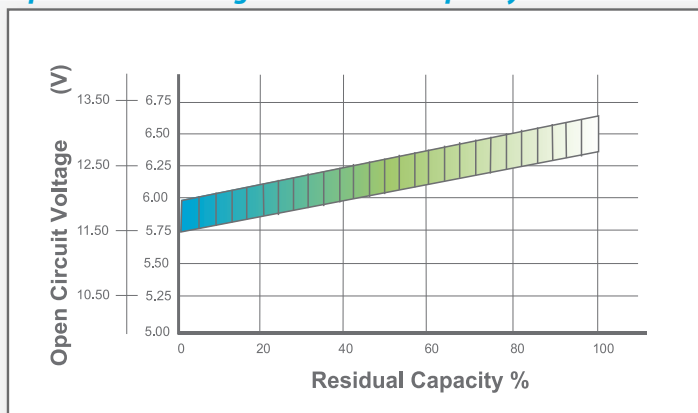
Shelf Life & Storage



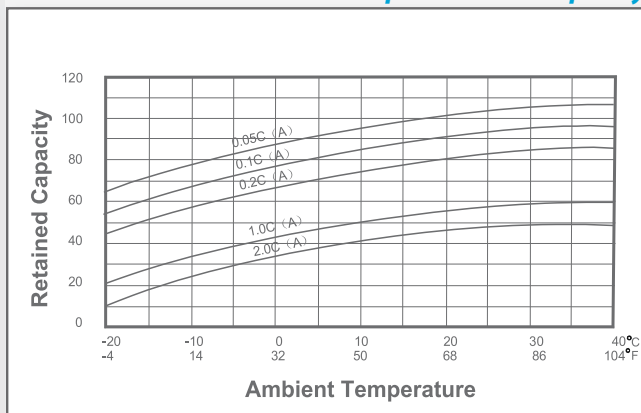
Cycle Life vs Depth of Discharge



Open Circuit Voltage vs Residual Capacity



Effect of Temperature on Capacity



Charge Current & Final Discharge Voltage

Application	Charge Voltage(V/Cell)			Max.Charge Current	Final Discharge Voltage V/Cell	Discharge Current(A)	Final Discharge Voltage V/Cell	Discharge Current(A)	Final Discharge Voltage V/Cell	Discharge Current(A)
	Temperature	Set Point	Allowable Range							
Cycle Use	25°C(77°F)	2.45	2.43~2.47	0.30C	1.75	0.2C>(A)	1.70	0.2C<(A)<0.5C	1.60	0.5C<(A)<1.0C
Standby	25°C(77°F)	2.28	2.27~2.30		1.30	>1.0C				

