

Absorbant Glass Mat (AGM) technology for superior performance. Valve regulated, spill proof construction allows safe operation in any position. Approved for transport by air. D.O.T., I.A.T.A.,

Maintenance-Free

## Specification

<b>Nominal Voltage</b>	8 volts		
<b>Nominal Capacity</b>	77° F (25° C)		
20-hr. (9.5A)	190 Ah		
10-hr. (17.6A)	176 Ah		
5-hr. (32.3A)	161 Ah		
1-hr. (114.0A)	114Ah		
<b>Approximate Weight</b>	78.3 lbs (35.5 kgs)		
<b>Internal Resistance</b> (approx.)	2.2 mΩ		
<b>Shelf Life</b> (% of normal capacity at 68° F (20° C))			
3 Months	6 Months	12 Months	
91%	82%	64%	
<b>Temperature Dependency of Capacity</b>			
104° F	77° F	32° F	5° F
102%	100%	85%	65%
<b>AGM Operational Temperature</b>			
Charge	0°C to 40°C		
Discharge	-15°C to 45°C		
<b>AGM Storage Temperature</b>	-15°C to 40°C		



## Charge Method (Constant Voltage)

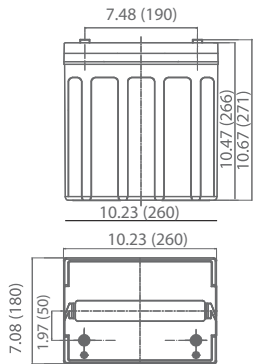
### Cycle Use (Repeating Use)

Initial Current	57A or smaller
Control Voltage	9.73-9.87 VDC

### Float Use

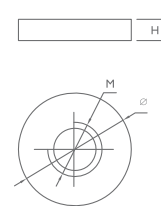
Control Voltage	9.07-9.20 VDC
-----------------	---------------

## Physical Dimensions: in (mm)



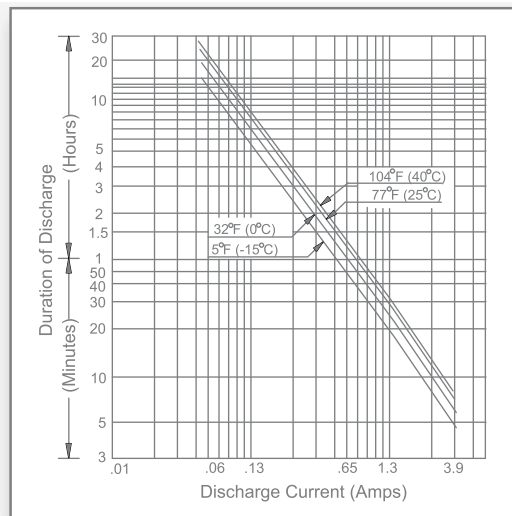
- L:** 10.23 in (260 mm)
  - W:** 7.08 in (180 mm)
  - H:** 10.47 in (266 mm)
  - TH:** 10.67 in (271 mm)
- Tolerances are +/- 0.04 in. (+/- 1 mm) and +/- 0.08 in. (+/- 2mm) for height dimensions. All data subject to change without notice.

## Terminals

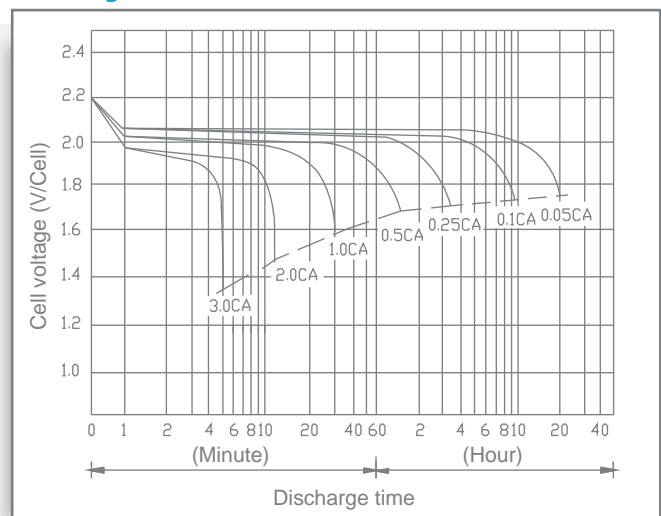


Dimension Type	M	Ø	H
I 8	10.0 mm 0.39 in	19.0 mm 0.75 in	2.00 mm 0.08 in

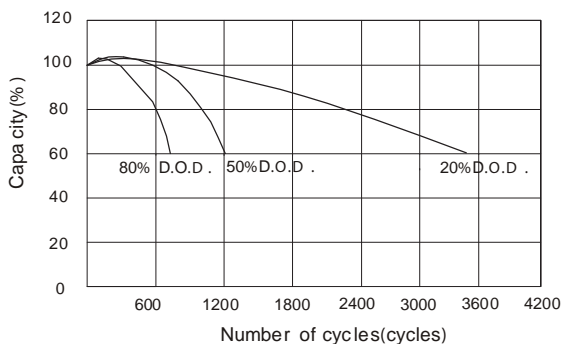
## Discharge Time vs. Discharge Current



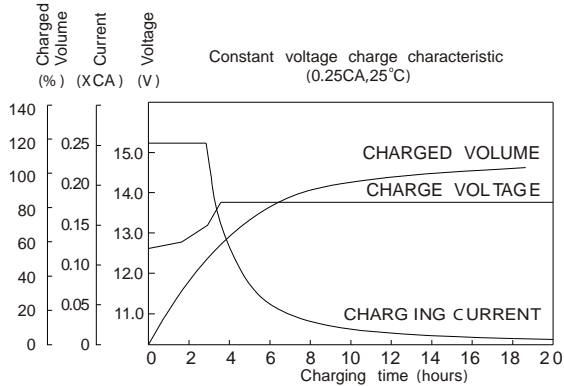
## Discharge Characteristics



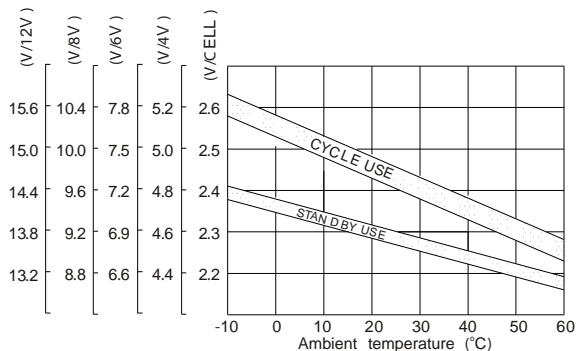
### CYCLE SERVICE LIFE IN RELATION TO DEPTH OF DISCHARGE



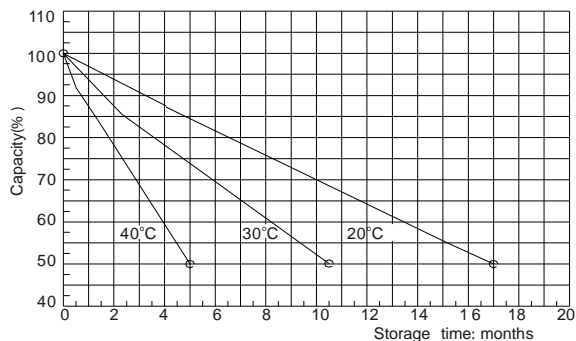
### CHARGE CHARACTERISTIC CURVE



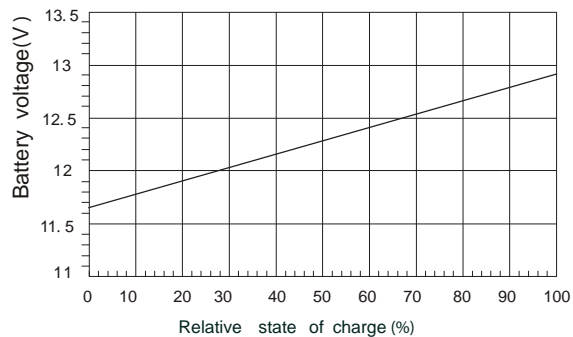
### RELATIONSHIP BETWEEN CHARGING VOLTAGE AND TEMPERATURE



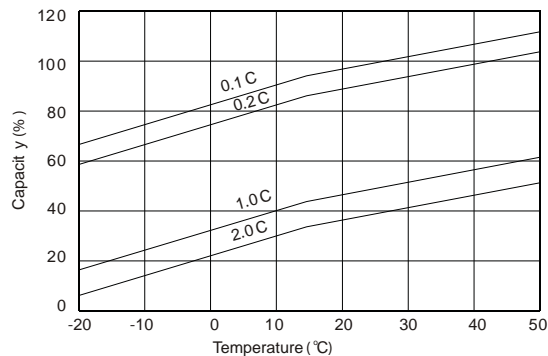
### SELF-DISCHARGE CHARACTERISTIC



### RELATIONSHIP OF OCV AND STATE OF CHARGE (25°C)



### TEMPERATURE EFFECTS ON CAPACITY



ISO 9001 :2008



## POWERSTRIDE BATTERY