

# UB12220

Maintenance-Free



## Specification

<b>Nominal Voltage</b>	12 volts		
<b>Nominal Capacity</b>	77° F (25° C)		
20-hr. (1.10A)	22 Ah		
10-hr. (2.05A)	20.46 Ah		
5-hr. (3.74A)	18.70 Ah		
1-hr. (13.20A)	13.20 Ah		
<b>Approximate Weight</b>	13.01 lbs (5.9 kgs)		
<b>Internal Resistance (approx.)</b>	11mOHMS		
<b>Shelf Life</b> (% of normal capacity at 77° F (25° C))			
3 Months	6 Months	12 Months	
91%	82%	64%	
<b>Temperature Dependency of Capacity</b>	(20 hour rate)		
104° F	77° F	32° F	5° F
102%	100%	85%	65%

## Charge Method (Constant Voltage)

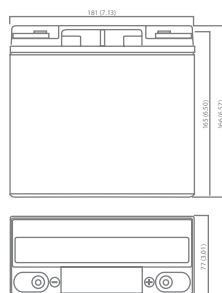
## Cycle Use (Repeating Use)

Initial Current	6.6 A or smaller
Control Voltage	14.5 - 14.9 V

## Float Use

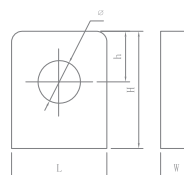
Control Voltage	13.6 - 13.8 V
-----------------	---------------

## Physical Dimensions: in (mm)



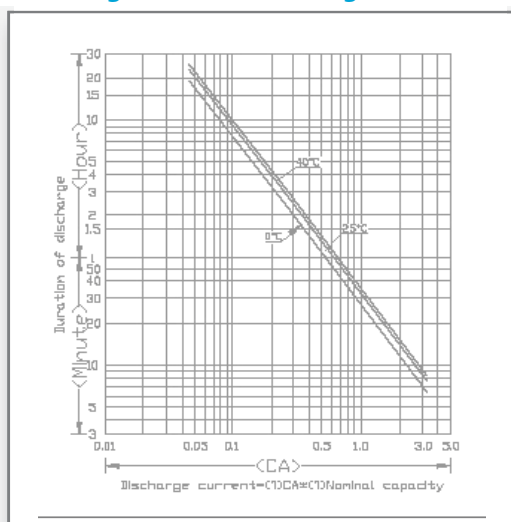
**L:** 7.13in (181.1 mm)  
**W:** 3.01in (76.5 mm)  
**H:** 6.50in (165.1 mm)  
**TH:** 6.57in (166.9 mm)  
 Tolerances are +/- 0.04 in. (+/- 1mm) and +/- 0.08 in. (+/- 2mm) for height dimensions. All data subject to change without notice.

## Terminals

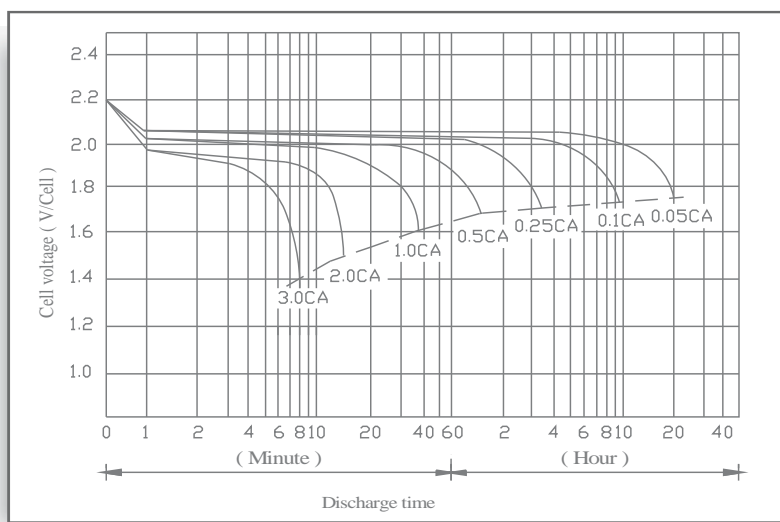


Dimension Type	L	W	H	h	ø
T4	12.3	3	12.5	5	5.5

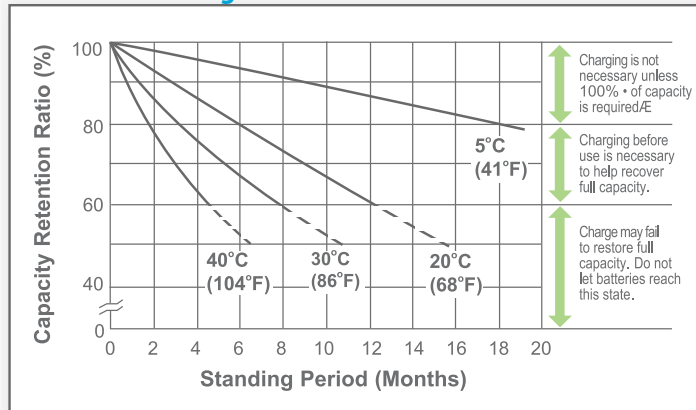
## Discharge Time vs. Discharge Current



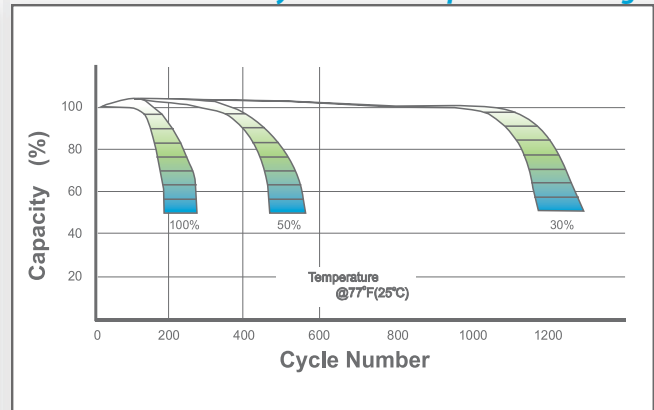
## Discharge Characteristics



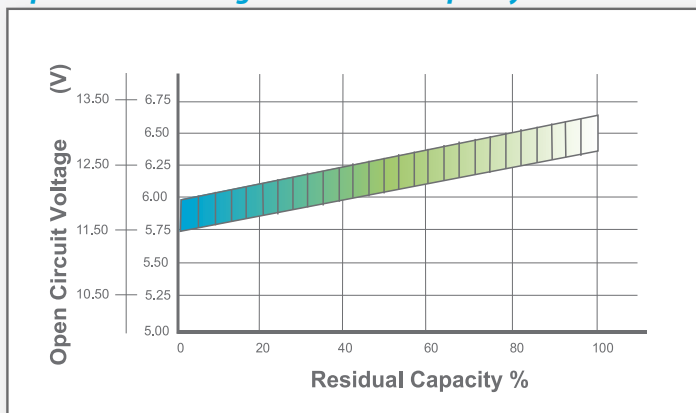
### Shelf Life & Storage



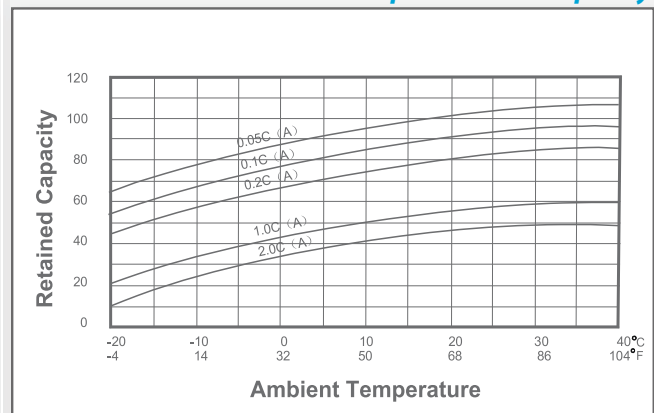
### Cycle Life vs Depth of Discharge



### Open Circuit Voltage vs Residual Capacity



### Effect of Temperature on Capacity



### Charge Current & Final Discharge Voltage

Application	Charge Voltage(V/Cell)			Max.Charge Current	Final Discharge Voltage V/Cell	1.75	1.70	1.60	1.30
	Temperature	Set Point	Allowable Range						
Cycle Use	25°C(77°F)	2.45	2.40~2.50	0.3C	Discharge Current(A)	0.2C>(A)	0.2C<(A)<0.5C	0.5C<(A)<1.0C	(A)>1.0C
Standby	25°C(77°F)	2.325	2.30~2.35						

