

# UB12150

Maintenance-Free



## POWERSTRIDE BATTERY

### Specification

<b>Nominal Voltage</b>	12 volts (6 cells)		
<b>Nominal Capacity</b>			
20-hr. (0.75A)	15.0 AH		
10-hr. (1.395A)	13.95 AH		
5-hr. (2.55A)	12.75 AH		
1-hr. (9.0A)	9.0 AH		
<b>Approximate Weight</b>	9.2 lbs. (4.2 kg)		
<b>Internal Resistance (approx.)</b>	18mΩ		
<b>Shelf Life</b> (% of normal capacity at 77° F (25° C))			
3 Months	6 Months	12 Months	
91%	82%	64%	
<b>Temperature Dependency of Capacity</b>			
104° F	77° F	32° F	5° F
102%	100%	85%	65%

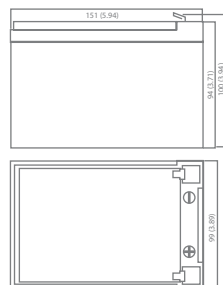


### Charge Method (Constant Voltage)

### Cycle Use (Repeating Use)

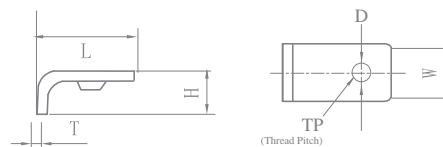
Initial Current	4.5 A or smaller
Control Voltage	14.5 - 14.9 V
<b>Float Use</b>	
Control Voltage	13.6 - 13.8 V

### Physical Dimensions: in (mm)



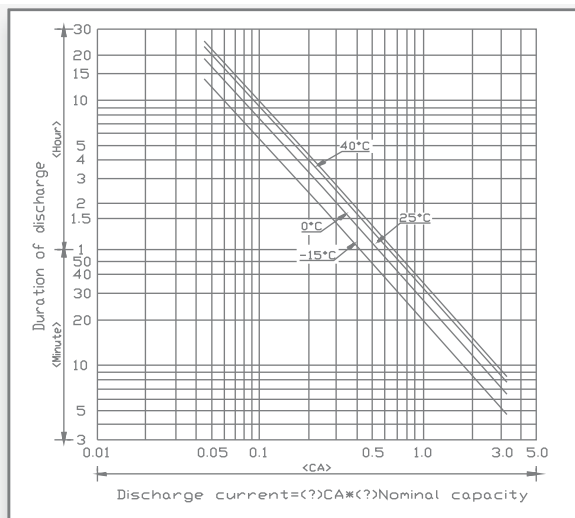
**L:** 5.95in (151 mm)  
**W:** 3.89in (99 mm)  
**H:** 3.71in (94 mm)  
**TH:** 3.94in (100 mm)  
 Tolerances are +/- 0.04 in. (+/- 1mm) and +/- 0.08 in. (+/- 2mm) for height dimensions. All data subject to change without notice.

### Terminals

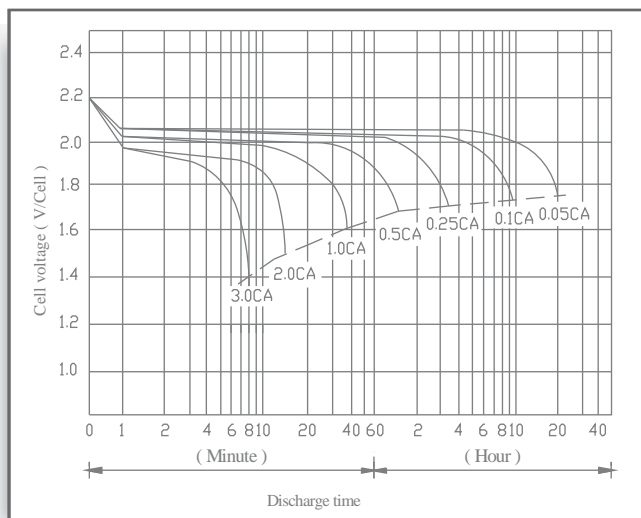


Type	Dimension	L	W	H	D	TP
0.31 inch tab with a hole for a 4mm screw		12.8	7.8	5.00	4.00	0.70

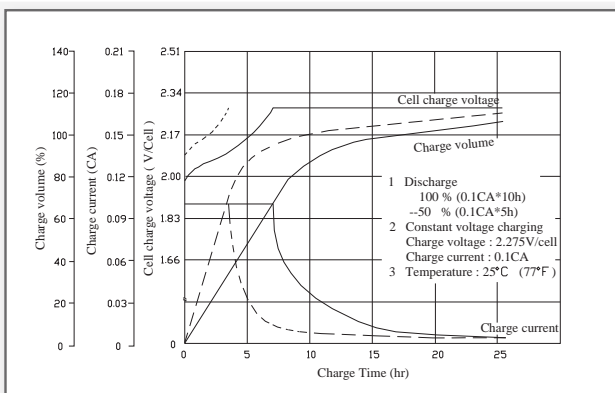
### Discharge Time vs. Discharge Current



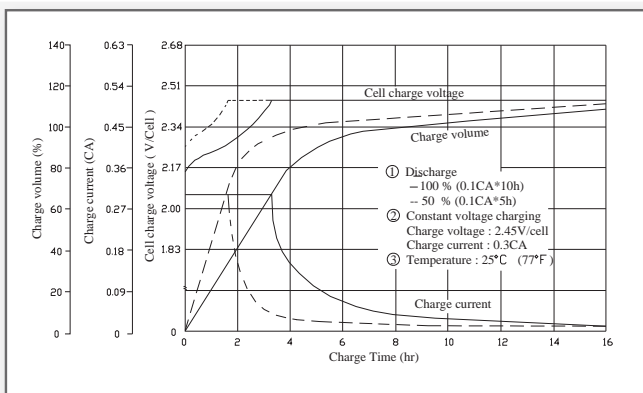
### Discharge Characteristics



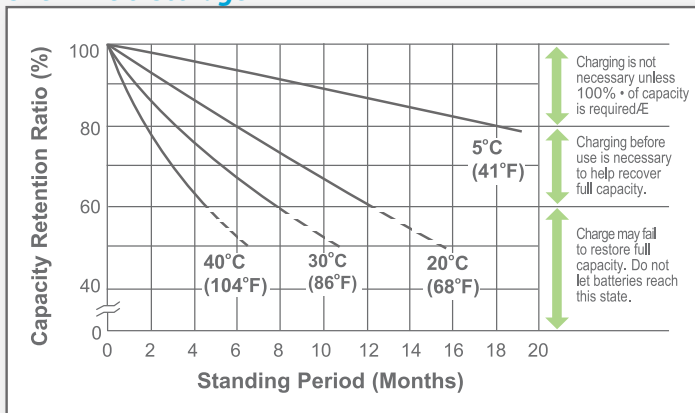
### Battery Charging Characteristics for Standby Use



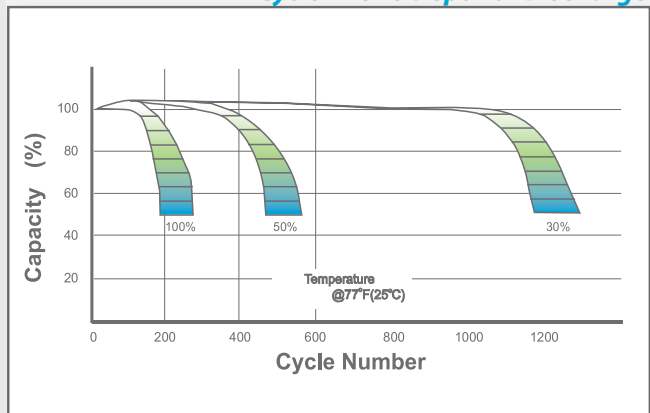
### Battery Charging Characteristics for Cyclic Use



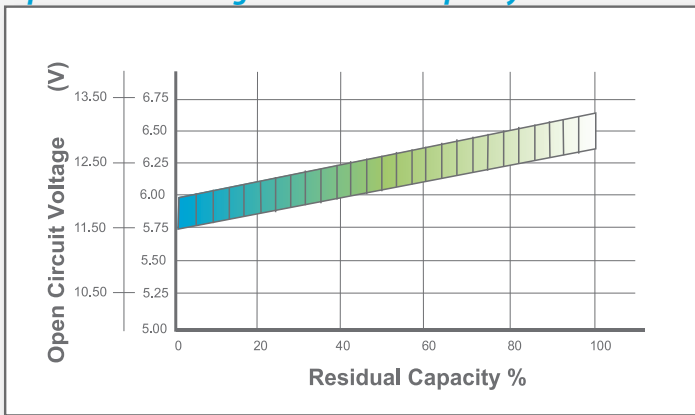
### Shelf Life & Storage



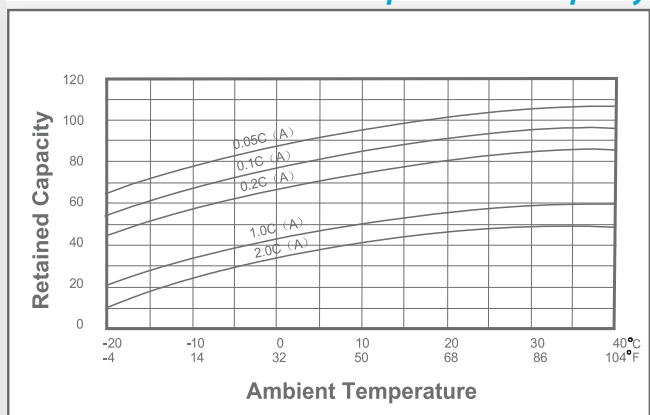
### Cycle Life vs Depth of Discharge



### Open Circuit Voltage vs Residual Capacity



### Effect of Temperature on Capacity



### Charge Current & Final Discharge Voltage

Application	Charge Voltage(V/Cell)			Max.Charge Current	Final Discharge Voltage V/Cell	1.75	1.70	1.60	1.30
	Temperature	Set Point	Allowable Range						
Cycle Use	25°C(77°F)	2.45	2.40-2.50	0.25C	Discharge	0.2C>(A)	0.2C<(A)<0.5C	0.5C<(A)<1.0C	(A)>1.0C
Standby	25°C(77°F)	2.30	2.27-2.30		Current(A)				

