

## Specification

<b>Nominal Voltage</b>	12 volts		
<b>Nominal Capacity</b>	77° F (25° C)		
20-hr. (1.30A)	26 Ah		
10-hr. (2.4 A)	24 Ah		
5-hr. (4.4 A)	22 Ah		
1-hr. (15.5 A)	15.5Ah		
<b>Approximate Weight</b>	17.9 lbs (8.1 kgs)		
<b>Internal Resistance (approx.)</b>	10mΩ		
<b>Shelf Life</b> (% of normal capacity at 77° F (25° C))			
3 Months	6 Months	12 Months	
91%	82%	64%	
<b>Temperature Dependency of Capacity</b>	(20 hour rate)		
104° F	77° F	32° F	5° F
102%	100%	85%	65%
<b>AGM Operational Temperature</b>			
Charge	0°C to 40°C		
Discharge	-15°C to 45°C		
<b>AGM Storage Temperature</b>	-15°C to 40°C		



### Charge Method (Constant Voltage)

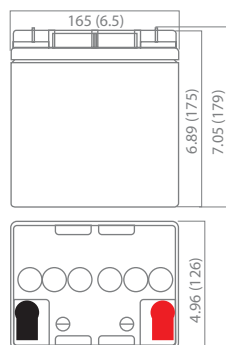
### Cycle Use (Repeating Use)

Initial Current	7.8A or smaller
Control Voltage	14.5 - 14.9 V

### Float Use

Control Voltage	13.6 - 13.8 V
-----------------	---------------

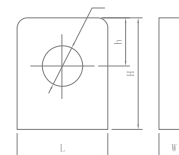
## Physical Dimensions: in (mm)



**L:** 6.50 in (165 mm)  
**W:** 4.96 in (126 mm)  
**H:** 6.89 in (175 mm)  
**TH:** 7.05 in (179 mm)

Tolerances are +/- 0.04 in. (+/- 1mm) and +/- 0.08 in. (+/- 2mm) for height dimensions. All data subject to change without notice.

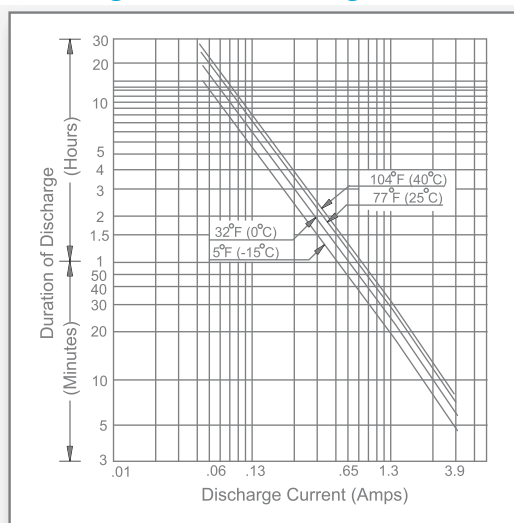
### Terminals



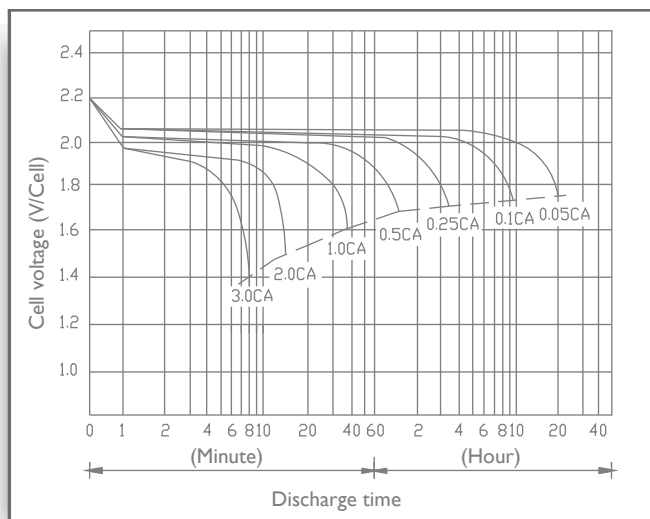
#### L Series (L Type Terminal)

Dimension Type	L	W	H	h	ø
L2	17.0	9.0	17.0	9.0	6.5

### Discharge Time vs. Discharge Current



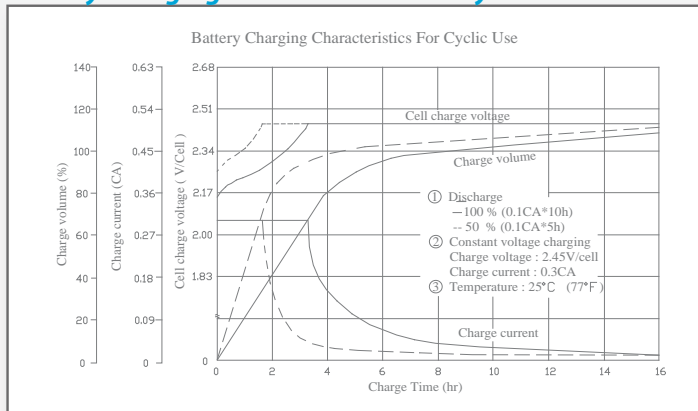
### Discharge Characteristics



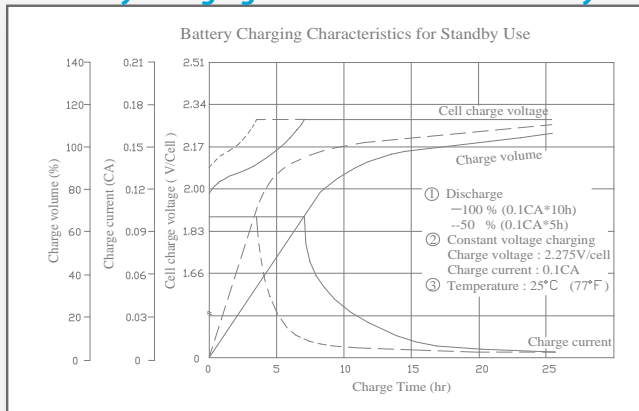
# UB26-12T

Maintenance-Free

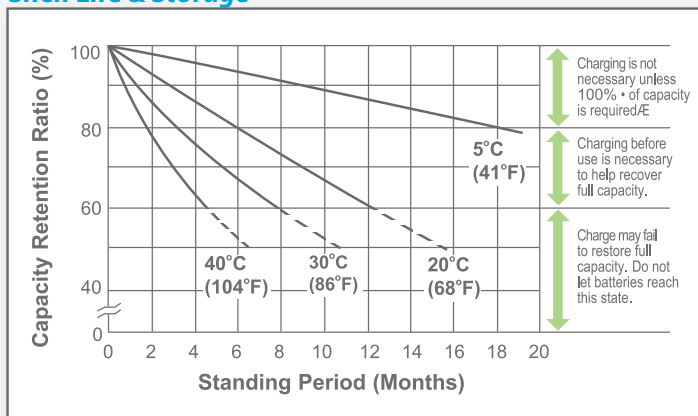
## Battery Charging Characteristics for Cyclic Use



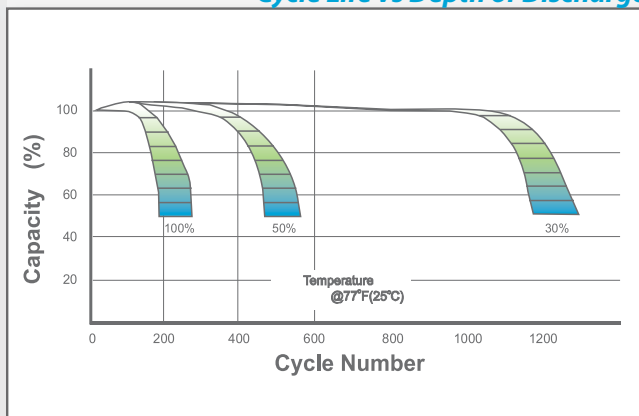
## Battery Charging Characteristics for Standby Use



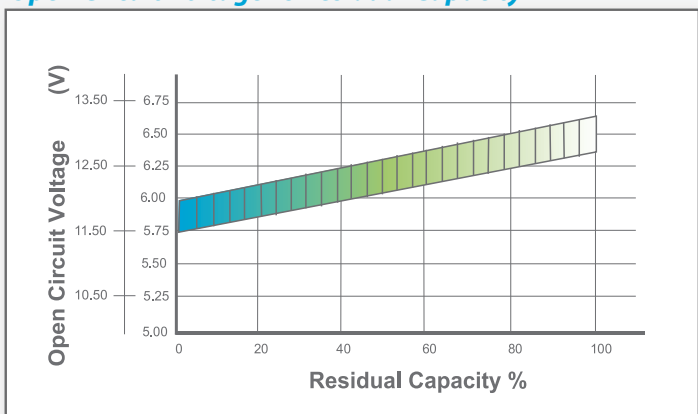
## Shelf Life & Storage



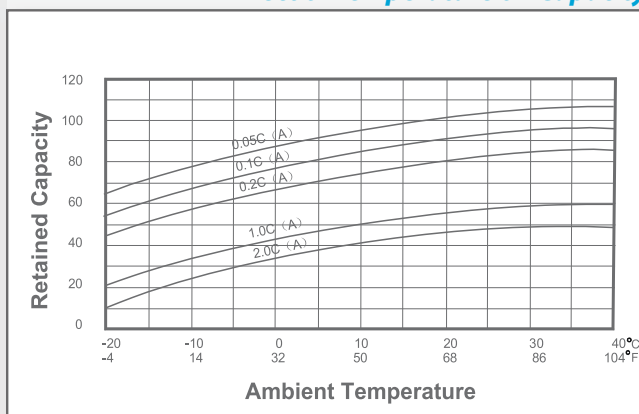
## Cycle Life vs Depth of Discharge



## Open Circuit Voltage vs Residual Capacity



## Effect of Temperature on Capacity



## Charge Current & Final Discharge Voltage

Application	Charge Voltage(V/Cell)			Max.Charge Current	Final Discharge Voltage V/Cell	Discharge Current(A)	1.75	1.70	1.60	1.30
	Temperature	Set Point	Allowable Range							
Cycle Use	25°C(77°F)	2.45	2.40~2.50	0.30C	1.75	0.2C>(A)	1.70	1.60	1.30	
Standby	25°C(77°F)	2.30	2.27~2.30							